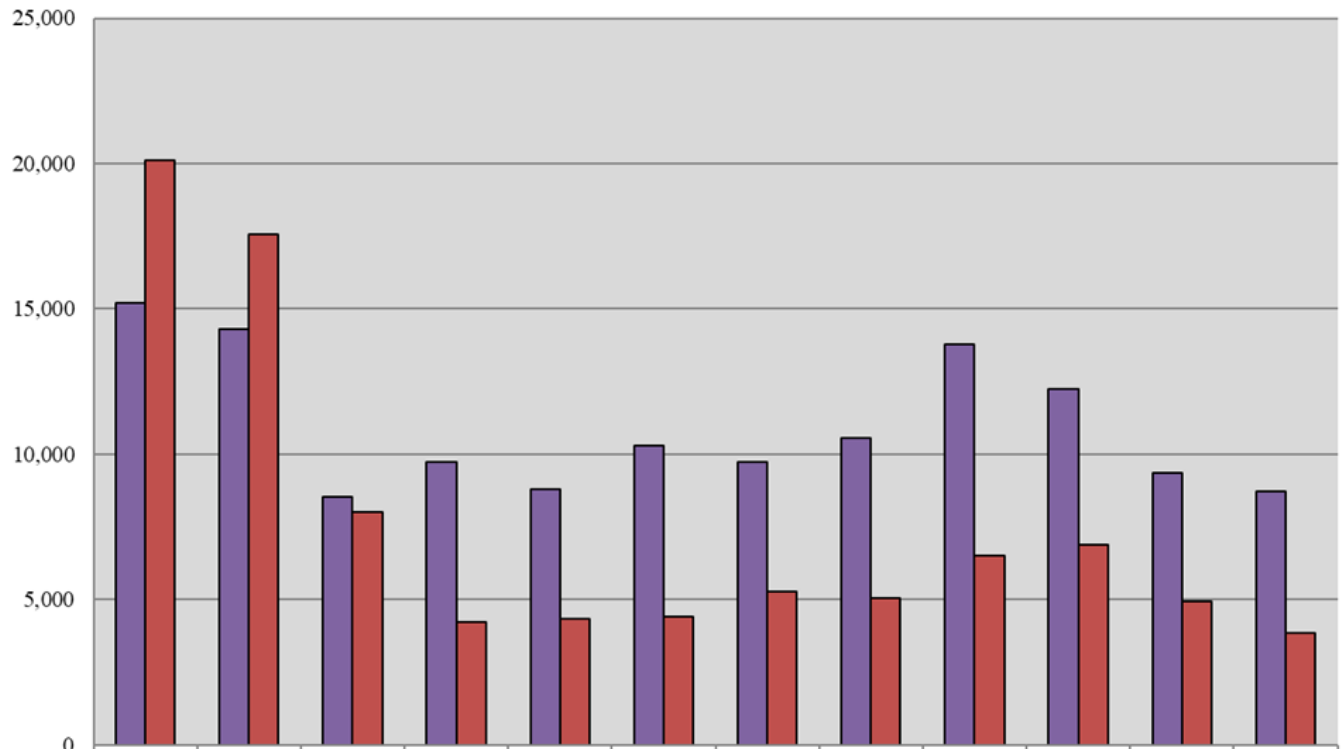


Court of Common Pleas 10-Year Civil Caseload Trend



	2010	2011	2012	2013	2014	2015	2016	2017	2018	2019	2020	2021
■ Filings	15,191	14,314	8,552	9,748	8,793	10,295	9,722	10,575	13,788	12,233	9,357	8,736
■ Dispositions	20,111	17,573	8,013	4,229	4,327	4,415	5,266	5,034	6,508	6,896	4,928	3,859

Fiscal Year